

ERP data exchange between different locations.

---

**Decentralized process management with Softproviding Link: SAP intelligence for shared functionality.**

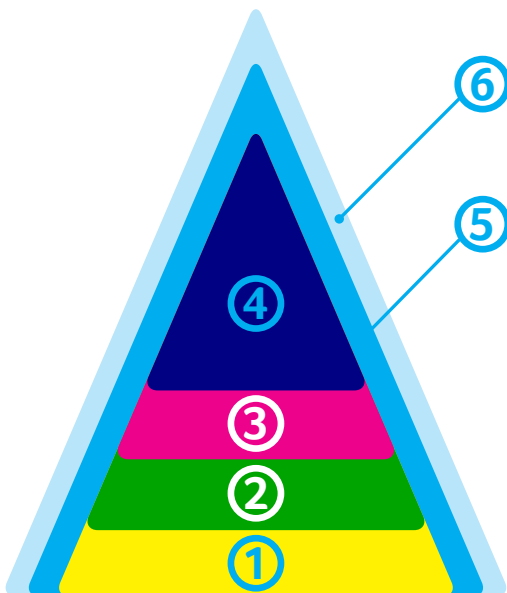
Think ahead. Go there.

# Softproviding Link. Enabling individual production sites to interact in perfect harmony.

Softproviding Link enables the operation of multiple local plant systems, as well as the central main system. The main benefit of this concept lies in its fail-safe design, as decentralization offers maximum reliability. Even when it comes to unpredictable connection problems to the central ERP system, production can be reliably maintained without any limitations. Softproviding Link enables data to be exchanged with all SAP-based main systems, with Softproviding Core or - in the meat industry - with Softproviding Meat, the solution that has been specifically tailored to suit the meat industry's requirements.

## Shared functionality adds value

Softproviding Link offers these locally organized companies the opportunity to make the functionality of its ERP main system available to their various production sites. The system permits the exchange of master data and transaction data between SAP and external systems, or between various clients within an SAP system. Data and processes, and particularly production-critical applications, can be distributed to local systems in accordance with business-specific requirements. Sensitive processes are thus effectively protected against system failure.



A company that sets standards in the meat industry can manage any type of process.

## Security through system redundancy

System decentralization with Softproviding Link increases operational security: if a fault occurs in one system, the other continues to run. Softproviding Link thus prevents the failure of business-critical processes and guarantees continued, uninterrupted production.

## Continuous reconciliation within the entire system

This system is usually synchronized at regular specified intervals. It is also possible to synchronize several systems that are linked together (system chain).

6 SAP Meat and Fish Management by msg since 2000

5 Softproviding Core

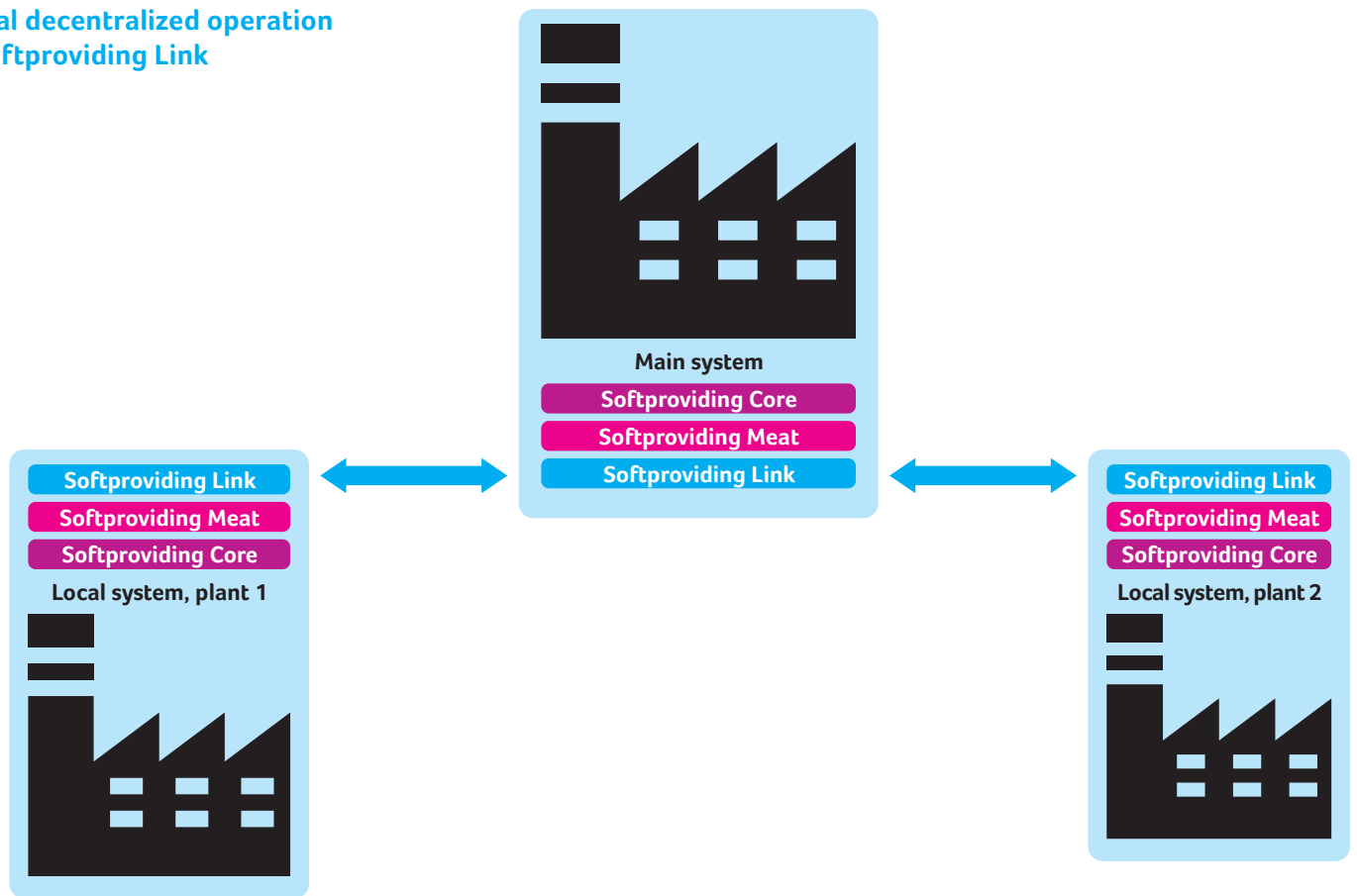
4 Softproviding Meat

3 Softproviding Link

2 SAP ERP (functional layer)

1 SAP NetWeaver (technical layer)

## Optional decentralized operation with Softproviding Link



### Carefully considered sophistication

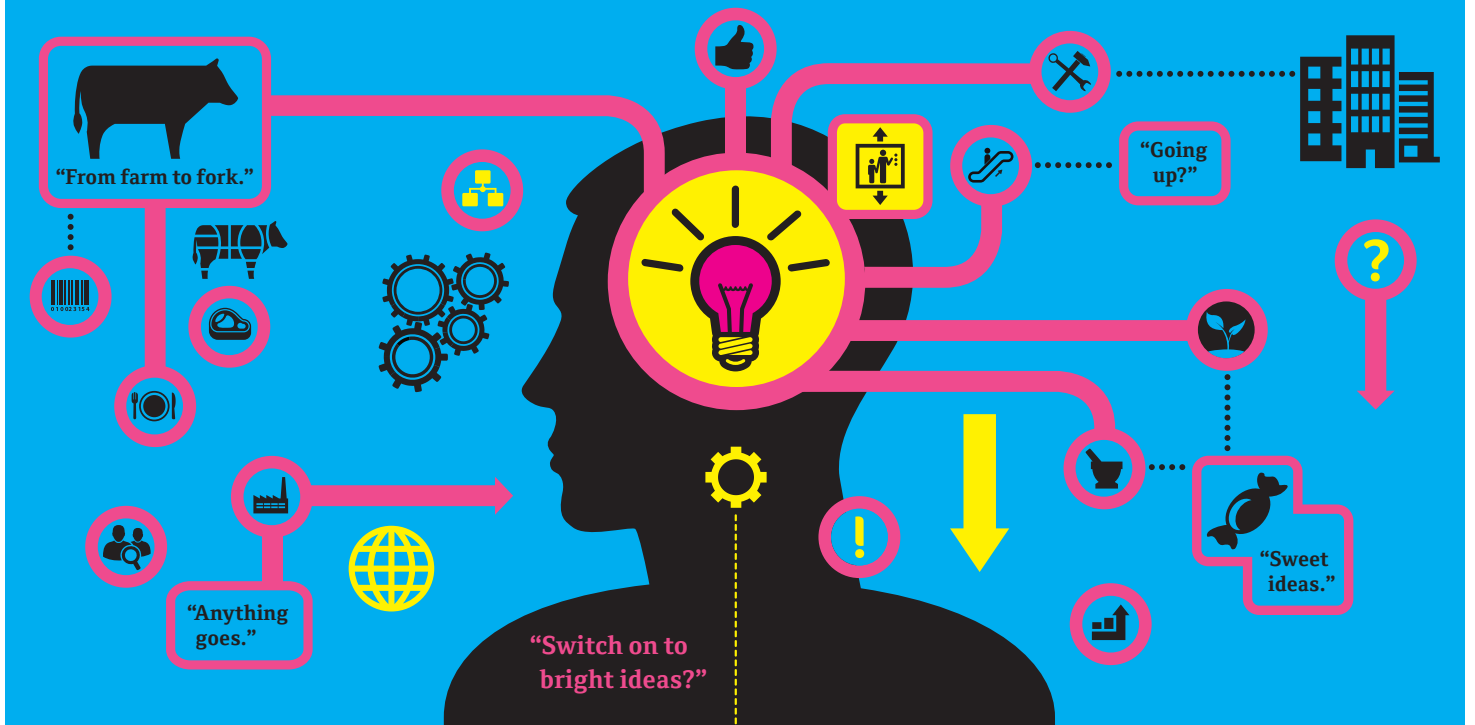
- Reliability guaranteed (fail-safe)
- Automation:  
Softproviding Link enables event or time-controlled execution of jobs with selection variants.
- Analyses:  
The system records all processes so that faults and errors can be analyzed. With synchronization, all the information on a specific object can be seen at a glance.
- Filters, actions and checks:  
These settings can be easily modified. They ensure consistent data quality in all systems.
- Stand-alone:  
In association with SAP Netweaver, Softproviding Link can also be run as a stand-alone solution.

### The industry solution The industry solution SAP Meat Management by msg with VBR status: a first-class reference which goes far beyond the meat industry.

Softproviding is one of the few software providers with whom SAP has entered into a partnership agreement for software development: as of September 2016, SAP Meat Management by msg features on the SAP price list and is being distributed globally via SAP Sales. The Meat Management solution was included in SAP's official product portfolio as a SAP Vendor Branded Reseller (VBR) product.

SAP Vendor Branded Reseller (VBR) products use SAP ERP and SAP NetWeaver as platforms and are fully compatible with SAP software products. They have undergone a rigorous qualification process and offer companies working with SAP additional functionality and greater flexibility.

*“Linking our production sites with Softproviding Link has turned out to be a strategically successful move. It has enabled us to considerably increase process security and thus our competitive position.”*



Great ideas are always simple – Softproviding simply makes them happen.

Softproviding AG, with its head office in Basel, Switzerland and part of the globally positioned msg group, is a software and IT consultancy company with an international focus. The company was established in 2000 with the idea of developing a comprehensive industry solution for the protein industry based on SAP. Since then, we have become the world's leading provider in this sector. In 2005, we were able to extend our expertise into other sectors. Today, our customers range from manufacturers of herbal lozenges to high-tech elevators.

Our business has grown in line with our customers' requirements. In the process, we have developed an in-depth understanding of business processes and solutions. Our aim is to help our customers progress and make them more successful. We see IT technologies as a means to an end. They only make sense if they contribute to the success of your business. We are there for you when you need us. We provide first-class services, such as automatic updates and round-the-clock support, as well as ideas and suggestions for the development of your projects and visions.

*Softproviding Link for decentralized production concepts combines a pioneering spirit with innovation, bringing efficiency and security to process management across locations.*

Concept, Text, Design: [www.culture-art-com.ch](http://www.culture-art-com.ch)

Softproviding AG  
 Dornacherstrasse 210  
 CH-4053 Basel  
 Switzerland  
 Phone +41 (0)61 508 21 21  
[sp.info@softproviding.com](mailto:sp.info@softproviding.com)  
[www.softproviding.com](http://www.softproviding.com)

**SAP + Softproviding + You = Leading the field**