

End-to-end control and absolute transparency throughout the entire supply chain

## SAP Meat and Fish Management by msg: A SAP Vendor Branded Reseller (VBR) Partnership

Think ahead. Go there.

# SAP Meat and Fish Management by msg with VBR partnership. Bringing you the unique benefits of an SAP partner solution.

## At the service of the meat industry since 2000

Softproviding, since 2016 a subsidiary of the msg group, is an IT company specializing in the organization of process chains in industrial production based on SAP. The company began in 2000 with the development of solutions for the protein industry and today ranks as one of the world's leading solution providers in this sector.

## SAP intelligence at its finest

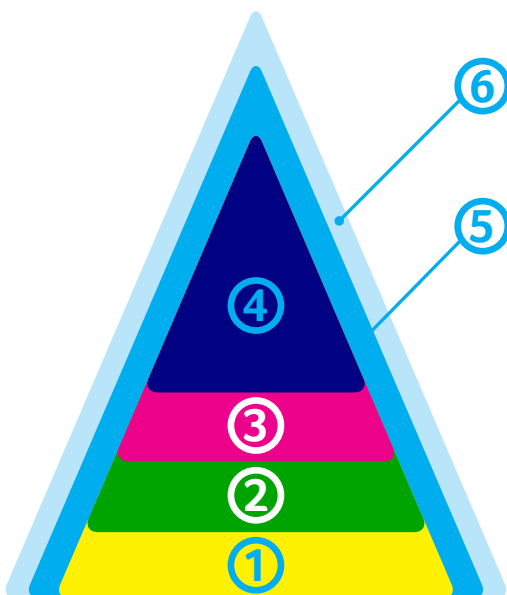
Softproviding is one of the few software providers with whom SAP has entered into a partnership agreement for software development: as of September 2016, SAP Meat and Fish Management by msg features on the SAP price list and is being distributed globally via SAP Sales. The Meat Management solution was included in SAP's official product portfolio as a SAP Vendor Branded Reseller (VBR) product.

## Effective implementation of industry expertise

SAP Meat and Fish Management by msg takes a multitude of process steps in its stride – from rearing to livestock procurement, slaughtering and disassembly, right through to distribution. As a result, this solution satisfies the particularly high requirements for process management transparency in the meat industry. It also takes account of other critical factors, such as the perishability of manufactured products and the strict requirements regarding hygiene and traceability.

## Global recognition from discerning customers

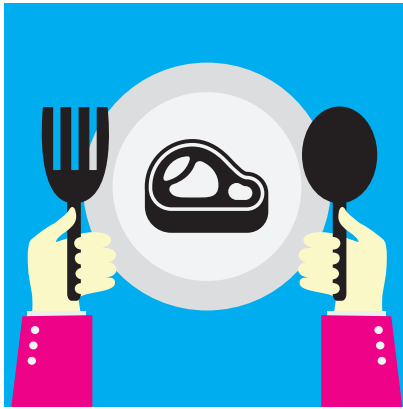
Softproviding products incorporate many years of experience and a wealth of expertise. Many well-known companies in the protein industry spanning four continents make use of this potential and use SAP Meat and Fish Management by msg to ensure that the flow of their production, information and value is efficient and secure.



## 6 SAP Meat and Fish Management by msg since 2000

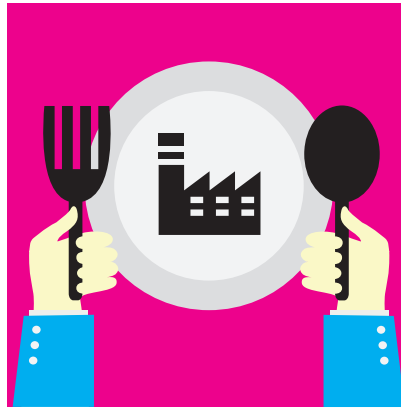
- 5 Softproviding Core
- 4 Softproviding Meat
- 3 Softproviding Link
- 2 SAP ERP (functional layer)
- 1 SAP NetWeaver (technical layer)

## SAP Meat Management by msg



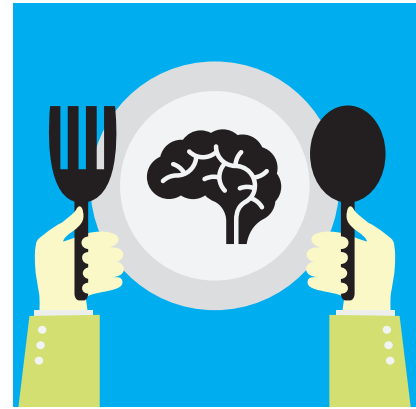
### **Softproviding Meat** Industry-specific

Reproduction of entire process from breeding/rearing to livestock procurement, slaughtering and disassembly, right through to distribution



### **Softproviding Core** Across industries

Supports planning, production process, picking, packaging, labelling, including data acquisition and mobile computing



### **Softproviding Link** Across industries

Flexible localization of processes and functionalities of the ERP main system for reliability (fail-safe solution) and targeted scalability

### **SAP Meat Management by msg: Software modules for your success right down the line.**

SAP Meat and Fish Management by msg is based on SAP ERP and consists of the components Softproviding Meat and Softproviding Core developed by Softproviding. The Softproviding Link module is also available for use as an additional option. This enables ERP data to be exchanged between different locations and ensures reliability (fail-safe solution).

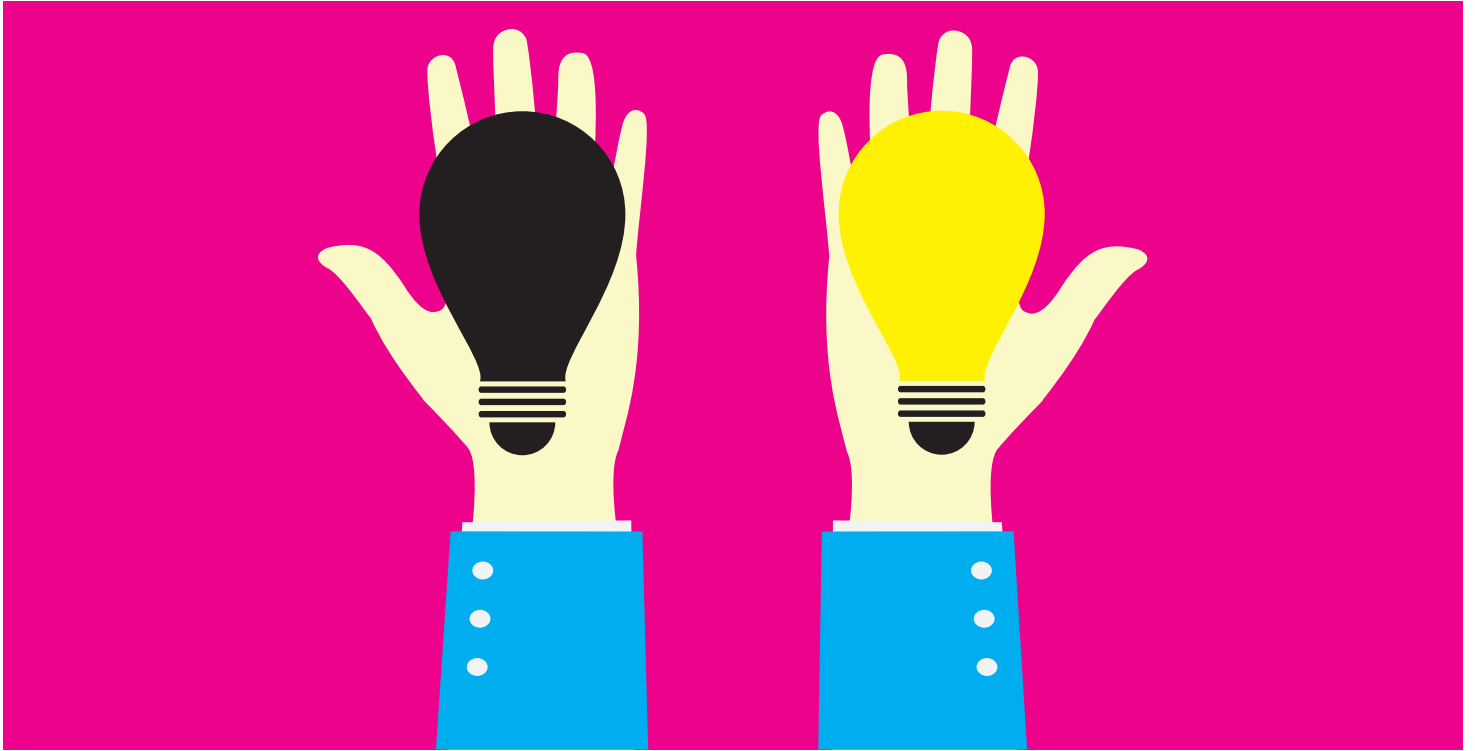
### **Softproviding services.**

#### **Expert support you can always rely on.**

Softproviding's SAP-based process management solutions are the result of a pioneering spirit, innovation and ongoing intensive analysis of sophisticated logistics procedures. An understanding of business-specific requirements and a willingness to respond individually to customer concerns form the basis for productive cooperation and for production and distribution concepts that are both viable and sustainable.

Softproviding is also synonymous with impeccable service, including automatic updates and round-the-clock support. Softproviding also supports customers by providing technical expertise and ideas for further developing their businesses.

**Always there when you need us!**



*SAP Meat and Fish Management by msg brings efficiency and transparency to the complex process of planning, production and distribution and enhances the competitive capacity of companies in the meat industry.*

Concept, Text, Design: [www.culture-art-com.ch](http://www.culture-art-com.ch)

Softproviding AG  
Dornacherstrasse 210  
CH-4053 Basel  
Switzerland  
Phone +41 (0)61 508 21 21  
[sp.info@softproviding.com](mailto:sp.info@softproviding.com)  
[www.softproviding.com](http://www.softproviding.com)

**SAP + Softproviding + You = Leading the field**